

# CENTRAL ROBINA LOCATION

# THE WHARF

Laver Drive, Robina



## INCREDIBLE WATERFRONT INVESTMENT - NRAS APPROVED

### Apartment features:

- 2 bathrooms
- Secure basement parking
- Stone benchtops
- Modern finishes
- Wool blend carpets
- European appliances

### Facilities includes:

- Private residents' pool and BBQ area
- Coastal skyline or hinterland views from most apartments
- Retail, dining and business service options on your doorstep
- Convenient central Robina living

### Walking distance to:

- Robina Town Centre
- Robina Train Station and bus interchange
- Skilled Park Stadium
- Robina Medical Precinct
- Adjacent to: The Rocket restaurant & retail precinct

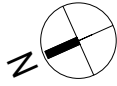
APARTMENT 271

**\$499,000**

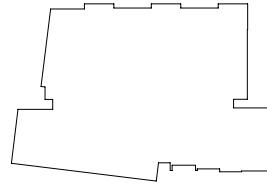
3 Bed  
2 Bath  
2 Car

**ONLY ONE  
REMAINS**

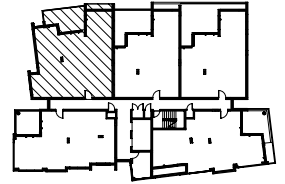




INTERNAL: 105 sqm  
 EXTERNAL: 16 sqm  
 TOTAL: 121 sqm



BUILDING 1



BUILDING 2



# APARTMENT 271 - FINAL OPPORTUNITY

**\$499,000**



Actual view from this apartment



While every endeavour has been made to ensure the accuracy of the information contained herein, Robina Projects Australia Pty Ltd and any subsidiaries ("Robina") provide no warranty, guarantee or representation regarding the accuracy, reliability and completeness of the information. As this document has been provided to you for reasons of convenience (and can be independently verified by you) Robina will not be liable (in tort, contract or otherwise) for any loss suffered as a result of you relying on information provided. No warranties or assurances can be given about the suitability of this document for any specific transaction. You should seek legal, financial or other professional advice.

